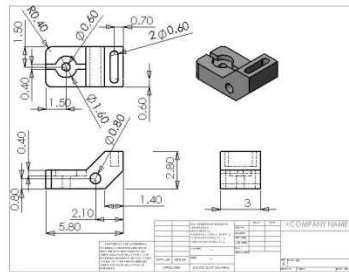


CONTENTS



SECTION 1

Using Advanced CAD to Create 2D and 3D Objects in Chief Architect 1

Introduction.....2

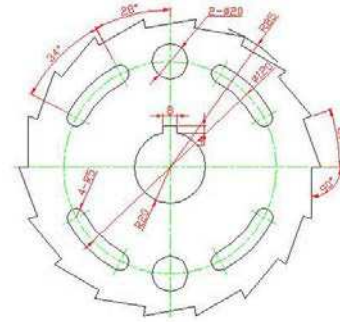
CHAPTER 1 THE BASIC EDIT TYPES *3*

Steps: Working with the Different Edit Types.....3

Can You Do It?.....11

CHAPTER 2 SETTING ARRAY COPY INTERVALS, ANGLES, AND QUANTITIES 14

Steps: Setting Array Copy Intervals, Angles, and
 Quantities.....14
 Can You Do It?.....18



CHAPTER 3 ARRAYING OBJECTS WITH DISTRIBUTED OBJECTS

TOOLS 21

Steps: Arraying Objects with Distributed Objects Tools.....23
 Can You Do It?.....27

CHAPTER 4 ALIGNING AND DISTRIBUTING A GROUP OF OBJECTS 28

Steps: Aligning and Distributing a Group of Objects.....28
 Can You Do It?.....36

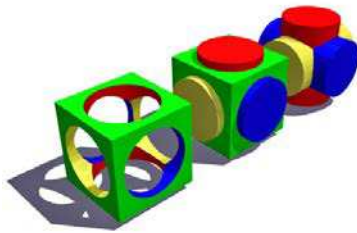
CHAPTER 5 POLYLINES-BREAKING POLYLINES 37

Steps: Breaking Polylines.....37
 Can You Do It?.....42

CHAPTER 6 POLYLINES-MERGING POLYLINES THAT OVERLAP 44

Steps: Merging Polylines.....44
 Can You Do It?.....45

CHAPTER 7 POLYLINES-SUBTRACTING POLYLINES THAT OVERLAP 46



Steps: Subtracting Polylines.....	46
Can You Do It?.....	52

CHAPTER 7 USING THE LINE STYLE EDITOR ***55***

Steps: Using the Line Style Editor.....	55
Can You Do It?.....	60

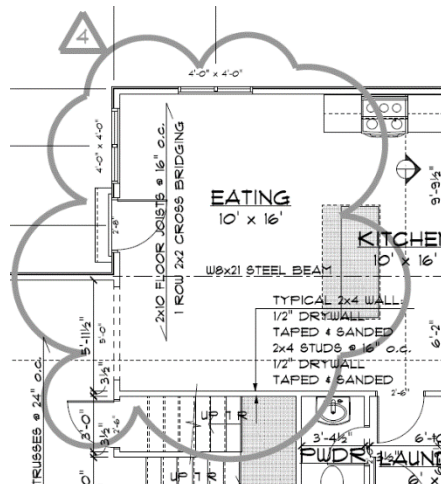
CHAPTER 9 TRANSFERRING LINE STYLE AND LAYER INFORMATION BETWEEN PLANS ***61***

Steps: Transferring Layer Information and Line Style Attributes.....	61
--	----

CHAPTER 10 USING THE TRIM AND EXTEND COMMANDS ***64***

Steps: Using the Trim and Extend Commands.....	64
Can You Do It?.....	68

CHAPTER 11 DRAWING REVISION CLOUDS ***71***



Steps: Drawing Revision Clouds.....	71
<i>CHAPTER 12 USING THE NUDGE TOOL</i>	77
Steps: Using the Nudge Tool.....	77
<i>CHAPTER 13 PLACING INSERTION POINTS IN CAD BLOCKS</i>	80
Steps: Placing Insertion Points in CAD Blocks.....	80
Can You Do It?.....	84
<i>CHAPTER 14 DISPLAYING TEXT LABELS FOR CAD OBJECTS</i>	85
Steps: Displaying Text Labels for CAD Objects	85



SECTION 2

ADVANCED CEILINGS	91
Introduction.....	92
<i>CHAPTER 15 BASIC CEILING TYPES AND THEIR MATERIALS</i>	92
Steps: Basic Ceiling Types and their Materials.....	92
<i>CHAPTER 16 DRAWING CATHEDRAL CEILINGS</i>	98
Step: Drawing Cathedral Ceilings	98
Can You Do It?.....	101
<i>CHAPTER 17 DRAWING VAULTED AND CURVED CEILINGS</i>	102
Steps: Drawing Vaulted and Curved Ceilings	103

Can You Do It?.....108

CHAPTER 18 CREATING TRAY CEILING EFFECTS BY RAISING THE CEILING ***109***

Steps: Creating Tray Ceiling Effects.....109

Can You Do It?.....112

CHAPTER 19 DRAWING A SUSPENDED CEILING WITH GRID AND TILE ***113***



Steps: Drawing a Suspended Ceiling with Grid and Tile113

Can You Do It?.....123

CHAPTER 20 CREATING A COFFERED CEILING ELEMENT WITH RECESSED BACKLIT PANEL ***123***

Steps: Creating a Coffered Ceiling Element with Recessed Backlit Panel124

Can You Do It?.....131

CHAPTER 21 CREATING A COFFERED CEILING WITH MULTIPLE RECESSED PANELS ***131***



Steps: Creating a Coffered Ceiling with Multiple Recessed Panels.....132
 Can You Do It?.....135



SECTION 3

ADVANCED FLOORS **137**

Introduction.....138

CHAPTER 22 CUTTING A HOLE IN A FLOOR PLATFORM ***138***



Steps: Cutting a Hole in a Floor Platform.....138

CHAPTER 23 FLOOR PLATFORM DEPTHS-SETTING VALUES BY ROOM OR BY AREA ***141***

Steps: Setting Platform Depths by Room or by Area.....141

CHAPTER 24 DESIGNATING PLATFORM OR BALLOON FRAMING CONDITIONS ***145***

Steps: Designating Platform or Balloon Framing Conditions.....145

CHAPTER 25 HANG FLOOR PLATFORM ABOVE ON WALL ***152***

Steps: Hanging a Floor Platform Above on Wall.....152

CHAPTER 26 BUILDING A LOW-PROFILE FRAMING FLOOR ***158***

Steps: Building a Low-Profile Framing Floor that Ledgers on the Foundation Wall.....160
Can You Do It?.....169

CHAPTER 27 RAISING THE CEILING AND LOWERING THE FLOOR ***170***

Steps: Raising the Ceiling and Lowering the Floor.....170
Can You Do It?.....180

CHAPTER 28 CHANGING THE PROPERTIES OF THE FLOOR STRUCTURE IN A MULTI-LEVEL BUILDING ***181***



Steps: Changing the Properties of the Floor Structure.....181



SECTION 4

ADVANCED FOUNDATIONS

187

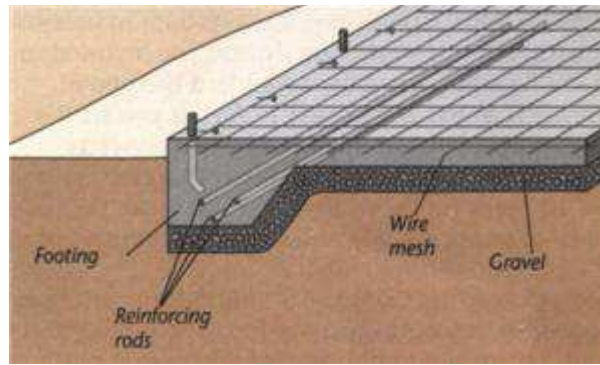
Introduction.....188

***CHAPTER 29 FOUNDATION WITH PARTIALLY EXPOSED BRICK AND A
BRICK LEDGE*** ***188***

Steps: Creating a Foundation with a Brick Ledge.....188

Can You Do It?.....194

***CHAPTER 30 MONOLITHIC SLAB TECHNOLOGY FOR CHIEF ARCHITECT
X4 AND X5*** ***195***



Steps: Using the New Monolithic Slab Technology.....195

CHAPTER 31 MONOLITHIC SLAB FOUNDATION AND A BRICK LEDGE **207**

Steps: Creating a Brick Ledge for a Monolithic Slab Foundation.....207

CHAPTER 32 DEVELOPING A FRAMED INTERIOR BEARING WALL IN A CRAWLSPACE FOUNDATION **213**

Steps: Developing a Framed Interior Bearing Wall in a Crawlspace Foundation.....213
 Can You Do It?.....220

CHAPTER 33 SPECIFYING BEARING WALLS **221**

Steps: Specifying Bearing Walls.....221
 Can You Do It?.....224

CHAPTER 34 CONSTRUCTING FOUNDATIONS WITH ATTACHED GARAGES **226**

Steps: Construction Foundations with Attached Garages.....226
 Can You Do It?.....232

CHAPTER 35 DEVELOPING A SPLIT-LEVEL FOUNDATION **234**

Steps: Developing a Split-Level Foundation.....235
 Can You Do It?.....243

CHAPTER 36 DEVELOPING A SPLIT-ENTRY FOUNDATION **245**

Steps: Developing a Split-Entry Foundation.....246
 Can You Do It?.....257



SECTION 5

ADVANCE FLOOR AND CEILING FRAMING 259

Introduction.....260

CHAPTER 37 CREATING GENERAL FRAMING IN CHIEF ARCHITECT 260

Steps: Creating General Framing in Chief Architect.....260

CHAPTER 38 CREATING MORE THAN ONE MUD SILL ON A FOUNDATION WALL 269

Steps: Creating a Double Mud Sill Plate.....269

CHAPTER 39 USING BEAMS AND BEARING LINES TO CUT JOISTS 274

Steps: Using Beams and Bearing Lines to Cut Joists.....274

CHAPTER 40 CREATING COMPLEX FLOOR SYSTEMS WITH MULTI-DIRECTIONAL JOIST S AND DIFFERENT JOIST DEPTHS 280

Steps: Mixing Joist Depths and Directions on the Same Floor.....280

CHAPTER 41 FLOOR JOIST SYSTEMS SUPPORTED BY BEAMS AND POSTS 288

Steps: Using Chief Architect's Beam and Post Tools.....288

CHAPTER 42 CREATING EXPOSED DECORATIVE BEAMS 297



Steps: Creating Exposed Decorative Beams.....297

CHAPTER 43 CREATING COLUMNS ***313***

Steps: Creating Columns.....313



SECTION 6

ADVANCED FRAMING FOR

FLOORS, WALLS, AND DECKS

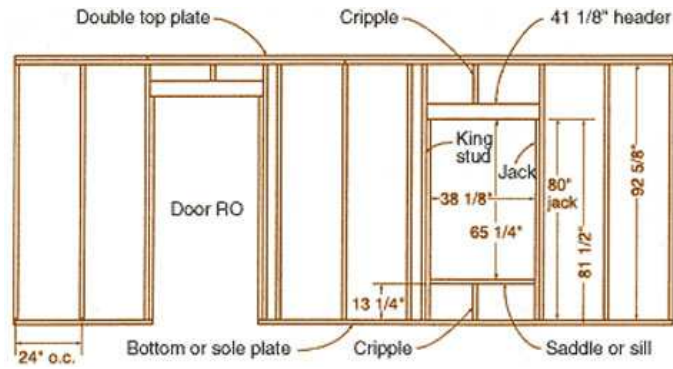
327

Introduction.....328

CHAPTER 44 CREATING FRAMING FOR WALLS IN CHIEF

ARCHITECT

328



Steps: Building Wall Framing in Chief Architect.....329

CHAPTER 45 REPORTING HOW FRAMING REPORTS TO YOUR MATERIAL LISTS ***343***

Steps: Specifying how Framing Reports to your Material Lists.....343

CHAPTER 46 USING THE MATERIALS LIST AND THE MASTER LIST TOGETHER ***351***

Steps: Using the Materials List and the Master List Together.....352

CHAPTER 47 USING THE WALL FRAMING DETAIL TO EDIT WALL FRAMING ***360***

Steps: Using the Wall Framing Detail to Edit Wall Framing.....360

CHAPTER 48 HOW TO KEEP A WALL FROM FRAMING ***368***

Steps: How to Keep a Wall from Framing.....369

CHAPTER 49 VARYING THE SPACING OF STUDS FOR DIFFERENT WALLS ***372***

Steps: Varying the Spacing of Studs for Different Walls.....372

CHAPTER 50 ALIGNING FRAMING MEMBERS USING THE FRAMING REFERENCE TOOL ***376***

Steps: Using the Framing Reference.....376

CHAPTER 51 CREATING BLOCKING AND BRACING ***381***

Steps: Creating Blocking and Bracing382

CHAPTER 52 USING THE INTERSECT/JOIN TWO LINES TOOL TO MITER FRAMING JOINTS ***388***

Steps: Mitering a Framing Joint.....389

CHAPTER 53 DISPLAYING FRAMING AS CAD LINES ***391***

Steps: Displaying Framing as CAD Lines.....392

CHAPTER 54 FLOOR AND CEILING TRUSSES ***395***

Steps: Framing with Floor and Ceiling Trusses.....396

CHAPTER 55 CREATING BALLOON FRAMING ***402***

Steps: Creating Balloon Framing.....403

CHAPTER 56 FRAMING DECKS AND BALCONIES ***408***



Steps: Framing Decks and Balconies.....409

***CHAPTER 57 MANUEL PLACEMENT OF DECK POSTS AND FOOTINGS ON
A TERRAIN*** **419**

Steps: Placing Deck Posts and Footing on a Terrain.....419



SECTION 7

ADVANCED ROOF FRAMING **425**

Introduction.....426

CHAPTER 58 FRAMING A ROOF IN CHIEF ARCHITECT **427**

Steps: Framing a Roof in Chief Architect.....427

CHAPTER 59 USING ROOF TRUSSES TO FRAME A ROOF **453**

Steps: Framing a Truss Roof System in Chief Architect.....456

***CHAPTER 60 ELIMINATING THE LOOKOUTS IN A TRUSS ROOF
SYSTEM*** **462**

Steps: Eliminating the Lookouts in a Truss Roof System.....462

CHAPTER 61 CREATING CANTILEVERED TRUSSES **464**

Steps: Creating Cantilevered Trusses.....465

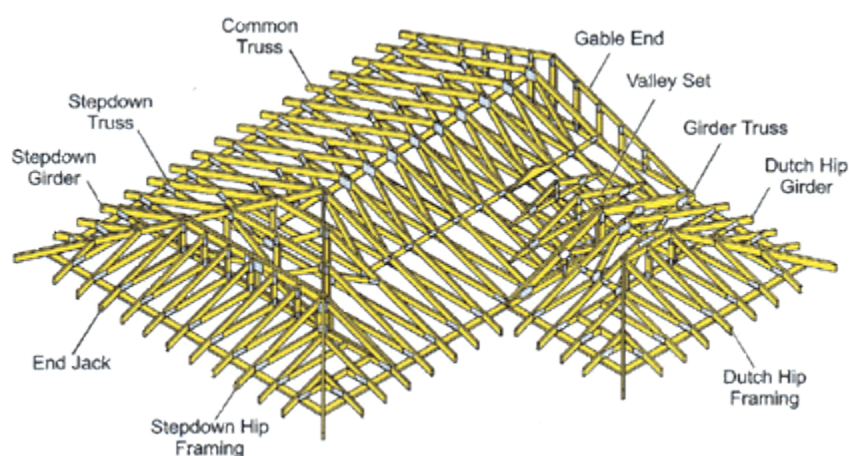
CHAPTER 62 CREATING ENERGY HEEL TRUSSES ***468***

Steps: Creating Energy Heel Trusses.....468

CHAPTER 63 CREATING CEILING STEP TRUSSES ***471***

Steps: Creating Ceiling Step Trusses.....471

CHAPTER 64 CREATING TRUSSES FOR INTERSECTING ROOFS USING A TRUSS BASE ***474***



Steps: Creating Trusses for Intersecting Roofs Using a Truss Base.....475

CHAPTER 65 CREATING TRUSSES FOR HIPS USING THE STEP-DOWN HIP METHOD ***480***

Steps: Creating Trusses for Hips Using the Step-Down Hip Method.....480

CHAPTER 66 CREATING TRUSSES FOR HIPS USING THE SUB GIRDER HIP METHOD ***485***

Steps: Creating Trusses for Hips Using the Sub Girder Hip Method.....486

CHAPTER 67 USING SCISSOR TRUSSES FOR VAULTED CEILINGS ***492***

Steps: Creating Scissor Trusses.....492

CHAPTER 68 DEVELOPING ATTIC TRUSSES FOR USABLE ATTIC SPACE **496**

Steps: Framing with Attic Trusses.....496

CHAPTER 69 EDITING A TRUSS AND LOCKING IT **502**

Steps: Editing a Truss and Locking It.....502

CHAPTER 70 FRAMING A SKYLIGHT **505**

Steps: Framing a Skylight by Locking a Truss.....505

CHAPTER 71 TRUSS LABELS AND CREATING A SCHEDULE **513**

Steps: Looking at Truss Labels and Creating a Schedule.....513



SECTION 8

ADVANCED STAIRS AND RAMPS **517**

Introduction.....518

CHAPTER 72 FORMING SUBSECTIONS BY MERGING STAIR SECTIONS **519**

Steps: Forming Subsections by Merging Stair Sections.....519

CHAPTER 73 STAIR FEATURES IN CHIEF ARCHITECT ***525***

Steps: Stair Features in Chief Architect.....526

CHAPTER 74 PLACING RAILINGS IN THE MIDDLE OF STAIRWAYS ***544***

Steps: Placing Railings in the Middle of Stairways.....544

CHAPTER 75 RAMPS ***547***

Steps: Placing Ramps.....548

CHAPTER 76 THE STAIR AND RAMP LANDING TOOL ***562***

Steps: Working with the Stair and Ramp Landing Tools.....562

CHAPTER 77 CUSTOM STAIR LANDINGS ***566***



Steps: Customizing Stair Landing Shapes.....566

CHAPTER 78 ADVANCED RAILING CONTROLS AND GETTING BALUSTERS AND NEWELS DISPLAYED IN PLAN ***575***

Steps: Advanced Railing Controls and Getting Balusters and Newels Displayed in Plan....575

CHAPTER 79 CREATE CUSTOM BALUSTERS AND RAILING PANELS ***582***

Steps: Creating Custom Balusters and Railing Panels.....583

CHAPTER 80 CREATING A STAIR WITH A SINGLE STEEL STRINGER 590

Steps: Creating a Stair with a Single Steel Stringer.....590

CHAPTER 81 CREATING AN EXTERIOR STAIR TO THE 2ND FLOOR FROM GRADE 592

Steps: Creating an Exterior Stair to the 2nd Floor from Grade.....592

CHAPTER 82 CREATING CURVED STAIRS 596



Steps: Creating Curved Stairs.....596

CHAPTER 83 FITTING A CURVED WALL TO CURVED STAIRS 601

Steps: Creating Curved Stairs.....601

CHAPTER 84 PLACING PRE-CONFIGURED CURVED STAIRS 605

Steps: Placing Pre-Configured Curved Stairs.....605

CHAPTER 85 DRAWING U-SHAPED WINDER STAIRS 608

Steps: Drawing U-Shaped Winder Stairs.....609

CHAPTER 86 HOW TO CONTROL THE DISPLAY OF WALLS UNDER WINDER STAIRS 613

Steps: How to Control the Display of Walls Under Winder Stairs.....613

SECTION 9



```

Ruby Console
pt1 = [0, 0, 0]
[0, 0, 0]
pt2 = [10, 10, 10]
[10, 10, 10]
model = Sketchup.active_model
#<Sketchup::Model:0x7edb3e0>

model.entities.add_line(pt1, pt2)

```

LABELS AND MACROS IN CHIEF ARCHITECT 621

Introduction.....622

CHAPTER 87 USING MACROS TO CONTROL THE DISPLAY OF ROOM

LABELS 622

Steps: Using Macros to Control the Display of Room Labels.....622

CHAPTER 88 TEXT LABELS AND TEXT MACROS 626

Steps: Working with Text Labels and Text Macros.....626

CHAPTER 89 CREATING MACROS WITH THE RUBY CONSOLE 637

Steps: Creating Macros with the Ruby Console.....637

CHAPTER 90 WORKING WITH LABEL MACROS 645

Steps: Working with Label Macros.....645



SECTION 10

WORKING WITH 3D SYMBOLS, TRIM AND MOLDINGS 653

Introduction.....654

CHAPTER 91 3D SYMBOLS 654

Steps: Importing and Developing 3D Symbols.....654

CHAPTER 92 TRIM AND MOLDINGS 661

Steps: Working with Trim and Moldings.....661

CHAPTER 93 CUSTOMIZING AND COMBINING MOLDING PROFILES 672

Steps: Drawing, Customizing, and Combining Molding Profiles.....672

CHAPTER 94 EXPANDING A ROOM MOLDING POLYLINE 680

Steps: Expanding a Room Molding Polyline.....680

CHAPTER 95 USING A ROOM MOLDING POLYLINE TO CREATE A BRICK HALF-WALL WITH CAP 683

Steps: Using a Room Molding Polyline to Create a Brick-Half-Wall with Cap.....684

CHAPTER 96 CREATING EXPOSED LOG RAFTERS USING A MOLDING POLYLINE 691

Steps: Creating Exposed Log Rafters Using a Molding Polyline.....691

CHAPTER 97 CREATING A DECORATIVE SKYLIGHT WITH A CUSTOM MOLDING **699**

Steps: Creating a Decorative Skylight with a Custom Molding.....699



SECTION 11

ADDITIONS AND REMODELING **709**

Introduction.....710

CHAPTER 98 GETTING AS-BUILTS: IMPORTING 2D FILES AND CONVERTING LINES TO 3D WALLS **710**

Steps: Getting As-Builts.....711

CHAPTER 99 GETTING AS-BUILTS: LOCKING AND TRACING IMPORTED 2D FILES **720**

Steps: Locking and Tracing 2D Files.....721

CHAPTER 100 GETTING AS-BUILTS: USING AN EXISTING PHOTO TO TRACE THE WALLS **722**

Steps: Using an Existing Photo to Trace Walls.....722

**CHAPTER 101 GETTING AN AS-BUILT MASK TO DISPLAY ON A
REMODEL PLAN** **724**

Steps: Getting an As-Built Mask to Display on a Remodel Plan.....724

**CHAPTER 102 SETTING UP LAYERS TO SHOW EXISTING, DEMOLITION,
AND NEW** **727**

Steps: Setting up Layers to Show Existing, Demolition, and New.....727

**CHAPTER 103 SETTING UP WALL TYPES TO SHOW EXISTING,
DEMOLITION, AND NEW** **730**

Steps: Setting up Wall Types to Show Existing, Demolition, and New.....730

**CHAPTER 104 SETTING UP LAYERS AND ROOM DEFINITION TO SHOW
DEMOLITION WALLS AND NEW MATERIALS** **734**

Steps: Setting up Layers and Room Definition to Show Demolition Walls and New
Materials.....735

CHAPTER 105 CREATING 3D VIEWS OF YOUR REMODEL PROJECT **741**



Steps: Showing Remodel and Addition Components in 3D Views.....742

**CHAPTER 106 DIFFERENTIATING NEW FRAMING AND CALCULATING
MATERIALS** **746**

Steps: Differentiating New Framing and Calculating Materials.....747

***CHAPTER 107 CREATING AN AUTOMATICALLY UPDATEABLE WALL
LEGEND*** ***751***

Steps: Creating an Automatically Updateable Wall Legend.....751

***CHAPTER 108 DEVELOPING MATCHING TEXTURES FOR DECK
BUILDING MATERIALS*** ***754***



Steps: Developing Matching Textures for Deck Building Materials.....754

***CHAPTER 109 PLACING A WINDOW AT THE JUNCTURE OF TWO
INLINE WALLS*** ***759***

Steps: Placing a Window at the Juncture of Two Inline Walls.....760

***CHAPTER 110 MATERIALS CALCULATIONS USING MATERIAL LIST
POLYLINES*** ***771***

Steps: Materials Calculations using Material List Polyines.....772